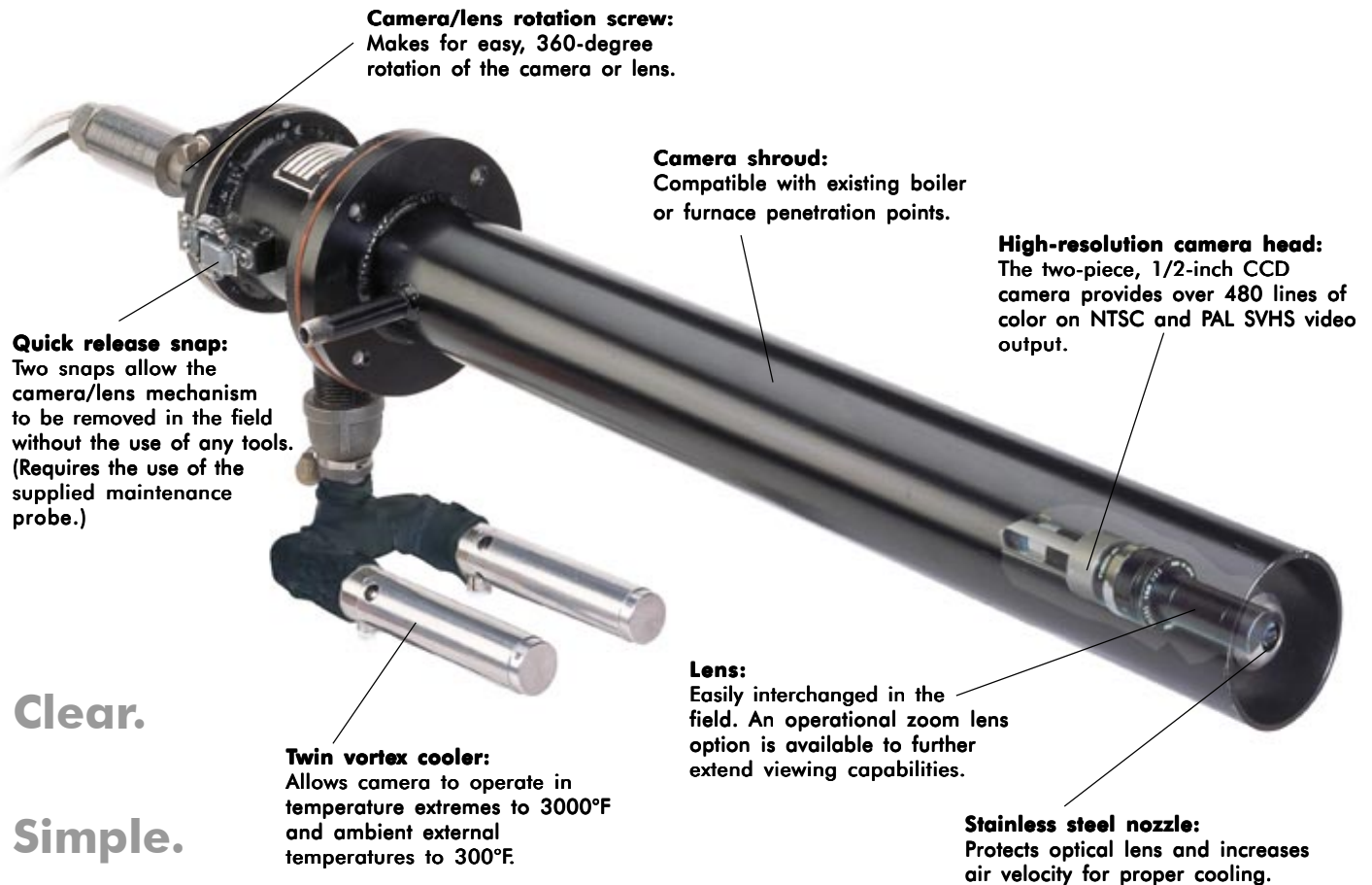


Wall-Eye

high-temperature remote viewing system



Clear.

Simple.

Powerful.

The Wall-Eye from Diamond Electronics is the most powerful industrial remote viewing system available. Using a high-tech camera, the Wall-Eye delivers pristine, highly detailed images of your boiler or furnace — in vivid color with 480 lines of resolution.

With the Wall-Eye, critical information typically lost by lens tubes is now brought into full view. The Wall-Eye's images are nearly twice as clear as lens tube devices. And unlike those other devices that are mounted externally on the furnace wall, the Wall-Eye's pinhole lens mounts directly on the camera head, making focus

adjustments straightforward and simple.

The Wall-Eye's wider field-of-view lets you see more of the furnace interior. That means the optical distortion common in lens tube systems is minimal.

Alarm messages are sent to the video signal when low air pressure or over-temperature conditions are present. These alerts can help you avoid costly operating problems.

Because the Wall-Eye's camera/lens mechanism features snap-out removal, the lenses can be changed

U.S. patents 6,069,652 and 6,239,831 B1

in a matter of minutes — right in the field. Plus, the camera-mounted lens means no individual optic elements to clean, repair, replace or precisely position.

Since most versions of the Wall-Eye use plant air, no water cooling is required. That saves on cooling utility expenses. And our Mini Wall-Eye has all the resolution of a Standard Wall-Eye, but is smaller in size to fit into an existing wall box or boiler opening.

Diamond Electronics
a Division of Diamond Power International, Inc.

Wall-Eye

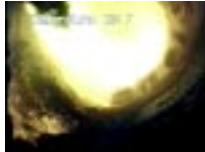
high-temperature remote viewing system

- **Allows for monitoring and inspection of the most severe part of the boiler or furnace to control process temperature and optimize performance.**
- **Simplifies maintenance with easy field adjustments.**
- **Provides for lower maintenance and cooling utility costs.**
- **Delivers the highest resolution images in the industry for a better view of the process.**

Wall-Eye video samples



Steel reheat furnace



Cement kiln



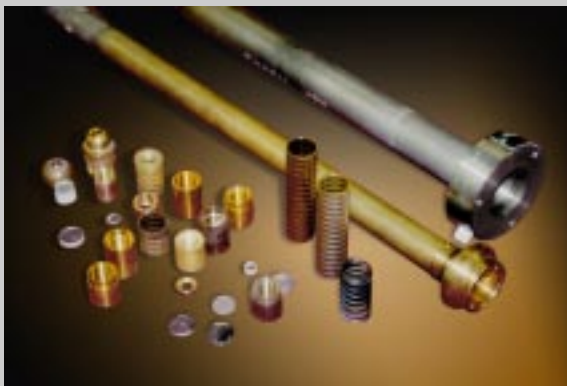
Utility boiler



Trash burner



Glass melt tank



The Wall-Eye camera replaces all these lens tube elements with a single camera/lens mechanism that snaps out for easy removal and maintenance.

Specifications

Air inlet

1" NPT pipe.

Air requirements

Instrument or filtered plant air and vortex coolers.

Applications

Coal-, oil- or gas-fired boilers and furnaces.

Negative pressure or balanced draft furnaces.

Positive pressure furnaces that already use a wall box and lens tube can be outfitted with the Mini Wall-Eye.

Camera system

NTSC Color (PAL optional).

Control box

Stainless steel NEMA 4. Optional outdoor version available. (Does not require cabinet cooler.)

Electrical requirements

110 v, 60 Hz, 1-1/2 A. Option: 220 v, 50 Hz.

Heat shield

Optional.

Housing assembly length

Standard Wall-Eye: 18" to 48".

Mini Wall-Eye: 18" to 36".

Custom lengths available for both versions.

Lens

Motorized zoom lens available for Standard Wall-Eye.

Manual zoom lens available for Mini Wall-Eye.

Both priced separately.

Operating temperature

Internal: +3000°F (1648°C).

External: +300°F (148°C) ambient.

Power (camera)

Source: 12VDC \pm 10 percent.

Consumption: 300 mA.

Resolution

>480 lines.

Diamond Electronics • P.O. Box 787 • Lancaster, OH 43130 • Phone: (740) 687-4032 • Fax: (740) 687-4201

The information contained herein is solely for informational purposes and is not offered, nor should be construed, as a warranty or contractual obligation. Diamond Power Specialty Company reserves the right to make design or material changes without notice.