



IK-545-SW

Selective Pattern® Waterlance



U.S. Patent Number 5,337,438

As utilities decide to burn lower quality fuels for either economic or compliance reasons, plants are expected to maintain capacity factors to meet load requirements. The Selective Pattern® Waterlance is the right tool to safely and effectively clean radiant heat transfer surfaces.

The IK-545 Selective Pattern Waterlance provides effective cleaning on tenacious slag deposits that conventional steam or air cleaning cannot fully remove. Our unique Waterlance design combines a high performance variable speed drive with accurate position sensors and PLC-based programmability. Each IK-545-SW Selective Pattern Waterlance is custom-programmed by Diamond Power engineers for specific boiler surfaces to maximize coverage and control effects on tube life by avoiding areas that can be damaged by water impact.

Applicable surfaces for cleaning include:

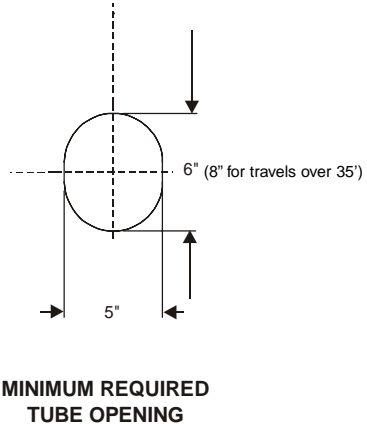
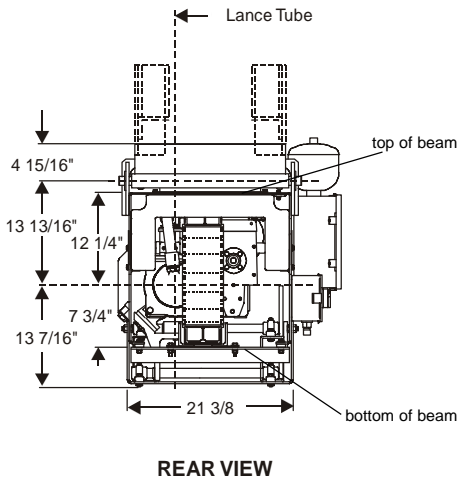
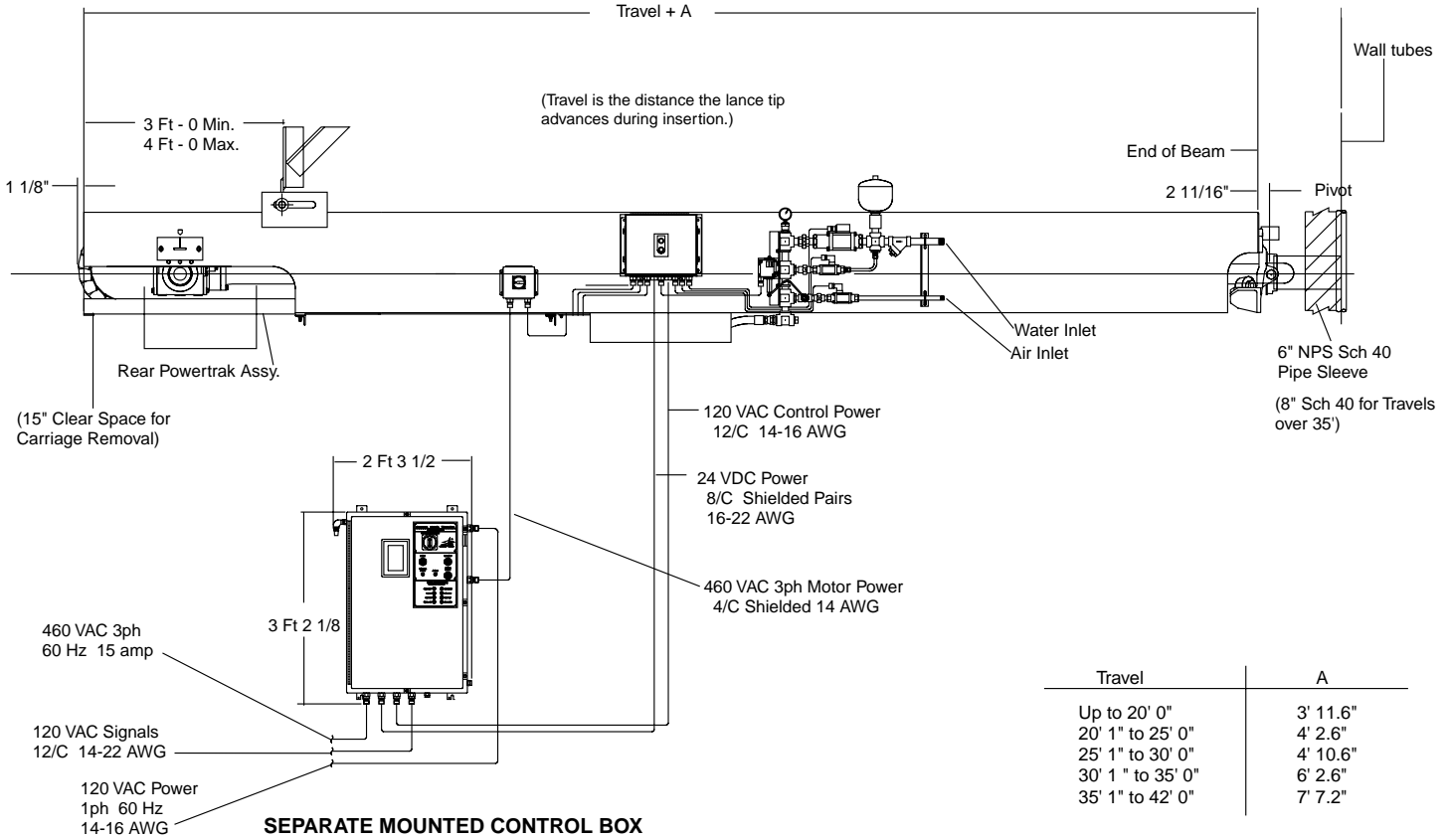
- Furnace walls
- Nose and hopper slopes
- Furnace center walls
- Wing walls
- Superheater pendants and platens

The key to long tube life is nozzle selection and the ability to maintain a constant jet progression velocity (JPV) as the water sweeps across the desired cleaning surfaces. A variety of nozzles are available which will reach up to 30 feet from each waterlance. With the capability to reach remote surfaces, a single Selective Pattern® Waterlance can often be used to clean multiple surfaces, especially on smaller units. A common example is to clean both the front and rear walls with an IK-545-SW installed on the sidewall.

Our Tube Life Database Program supports our Waterlance users by providing a tube crack analysis and tracking service. Analysis of the tubes from over 95 participating plants to date have confirmed the tube life impact of Diamond Power waterlances.



**SIDE ELEVATION
(Cold Position)**



(Dimensions in inches unless otherwise indicated)

The Selective Pattern® Waterlance is a unique boiler cleaning tool, which provides the best combination of extensive coverage area, proven tube life and application flexibility.

For engineered solutions to your specific boiler cleaning needs, contact your local Diamond Power representative or call our main office at:
P.O. Box 415 • Lancaster, OH 43130 • Phone: (740) 687-6500 • Fax: (740) 687-4304



www.diamondpower.com

©2000 Diamond Power International, Inc.
All rights reserved.

DP-9602 rev. 12/00